

ANNEX B

CT SCAN PROTOCOL

Name or Patient ID

Dental Practice

Note

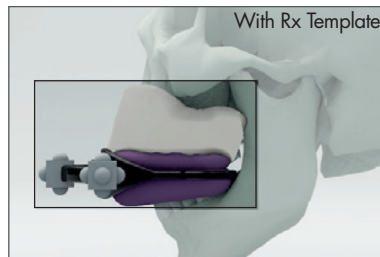
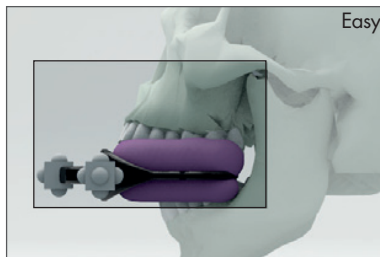
Date

Radiological Template & Universal Stent

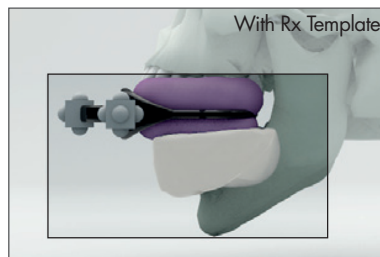
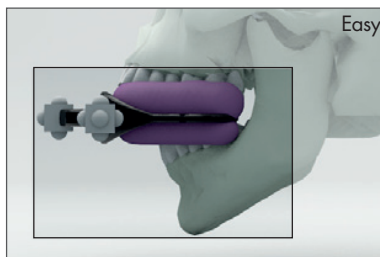
Please check that the Radiological Template & Universal Stent are seated properly and check that the Radiological Template make good contact with the gums and teeth surface.

Patient positioning

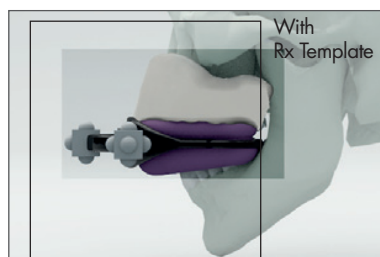
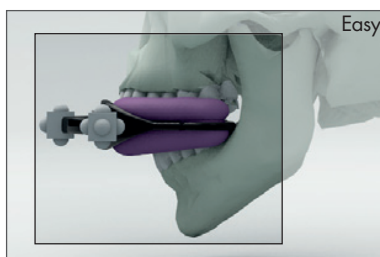
*Maxilla: scan the entire maxillary arch and the maxillary sinuses region.
The CT volume should include all the radiopaque markings on the Universal Stent.*



*Mandible: scan the entire mandibular arch and the mandibular canals region.
The CT volume should include all the radiopaque markings on the Universal Stent.*



*Maxilla & Mandible: if the Patient needs an implant surgery for both jaws it is possible to perform a single scan. Scan the entire maxillary and mandibular arch including the maxillary sinuses region and the mandibular canals region.
The CT volume should include all the radiopaque markings on the Universal Stent.*



Scan Parameters

Pictures Size	from 512x512 to 800x800
Gantry Tilt	0.0° Mandatory
Axials thickness	from 0.25 to 1.00 mm
Image Format	DICOM 3.0 multfile
Compression	None

After CT scan please return to the Patient the Radiological Template, the Universal Stent and the CD-ROM with the axials images in DICOM 3.0 format (multifile). If both jaws were scanned please save the axials sequences in two separate folders or two CD-ROMs.